

HUME RANGE

RANGE STANDING ORDERS



WELLINGTON BRANCH

This page intentionally blank

TABLE OF CONTENTS

1. Range Name.....	3
2. Individual Range Names	3
3. RSO Date.....	3
4. Introduction.....	3
5. Responsibilities	4
6. Compliance with RSOs.....	4
7. Range Location.....	4
8. Approved range users and priority of use.....	4
9. Warning flags and danger signs.....	5
10. Individual ranges, restrictions & conditions of use	5
11. Range safety roles	7
12. Range safety rules	7
13. New ammunition use	8
14. Targets.....	9
15. Steel Targets	9
16. Moving targets.....	9
17. Minimum safe engagement distances	9
18. Eye and hearing protection.....	9
19. Medical and emergency.....	9
20. Accident and incident procedure	10
21. Fire precautions and procedures.....	10
22. Range clearance	10
23. Unauthorised access and/or use of the range.....	10
24. Cones of fire.....	11
25. Inability to achieve cone of fire.....	11
26. Unlicensed or inexperienced shooters.....	12
27. Test firing.....	12
28. Air danger height.....	12
29. Range maintenance plan	12
30. Children (Minors)	12
31. Health and hygiene.....	12
32. Domestic animals	12
33. Amendment to RSOs	13
34. Authorisation of RSOs.....	13
35. Distribution list	13

Appendices

Appendix A	Range Layout.....	14
Appendix B	Target locations and firing points	15
Appendix C	100m Range Template	18
Appendix D	200m Range Template	19
Appendix E	300m Range Template	20
Appendix F	500m Range Template	21
Appendix G	Hume Range Multi Distance RDA Range Template	22
Appendix F	Contact List.....	23

Acronyms

FDA	Full Danger Area
RDA	Reduced Danger Area
NDA	No Danger Area
RSOs	Range Standing Orders
SRO	Shooting Range Operator
RO	Range officer, Officer on Duty, Range Safety Officer

HUME RANGE - RANGE STANDING ORDERS

1. RANGE NAME

The shooting range has been named the “Hume Range” after the Hume Family who host the NZDA Wellington Branch.

2. INDIVIDUAL RANGE NAMES

The individual ranges within the Hume Range are as follows;

- 50m “Running Boar” range
- 25m “sighting-in” range
- 50m centrefire & rimfire range
- 50-500m multi distance field range

Note: The 50 metre “Running Boar” range originally constructed for moving targets is now authorised for approved static targets only.

3. RANGE STANDING ORDERS DATE

These range standing orders (RSOs) are effective as at May 2023.

4. INTRODUCTION

The Hume Range is situated on Takarau Gorge Road, Ohariu being part of the wider Hume family farm that extends through to Rifle Range Road. The physical roadside address of the property is 211 Takarau Gorge Road, however Wellington City Council records the property address as 213 Takarau Gorge Road. The legal owner of the property is John Hume and the legal description of the property is Lot 4 DP 367664, Record of Title reference is 274934.

The range danger area extends over 95 Takarau Gorge Road, legal description Lots 1-2 DP 536366 owned by Murray and Caroline Burden, and 255 Takarau Gorge Road, Legal Description Lot 3 DP 545141 owned by Gavin Bruce. Both land owners have approved the use of the affected land within the ranger danger area.

The range includes 25m and 50m No Danger Area (NDA) ranges and a 50m – 500m Multi Distance Reduced Danger Area (RDA) “Field” range. The range layout and RDA templates are included as Appendices A-G.

These orders apply to all range users and all range users must acknowledge that they have read and understood these orders before using the range. A copy of the RSOs are to be held in the Range Hut and 100m Firing line Hut.

Upon entry to the range, all range users must report to the Range Officer and sign the range register. By signing the Range Register, the range users acknowledges that have read, understood and agree to comply with RSO’s and any directions from the Range Officer.

All range users must produce their Membership Card and/or Firearms Licence upon request of the Range Officer and such details may be recorded by the Range Officer.

The current hours of operation are 9:00am – 2:00pm each Sunday. Additional “one-off” shoots may be organised by the Shooting range Operator (SRO) with the approval of the land owner. Last entry for those intending to shoot is 12:30pm

5. RESPONSIBILITIES

NZDA Wellington Branch is the Shooting Range Operator (SRO) and is responsible for the overall safe operation of the range. The Branch committee is responsible for the routine administration, management, and maintenance of the range.

It is the responsibility of the Range Officer to ensure the raising of the main warning flag on the Range Hut flag pole, and the raising or placing of warning flags on all ranges to be used.

The Range Officer may fulfil their role and participate as a shooter, provided they ensure that they are able to maintain control of the range. The ability to maintain control will be dependent on the number and experience of the shooters on the range and will be at the discretion of the Range Officer.

It is the responsibility of the Range Officer to close the range at the conclusion of shooting.

6. COMPLIANCE WITH RANGE STANDING ORDERS

All range users must comply with the RSOs. Failure to comply with the RSOs will in the first instance will result in a warning and corrective instruction from the Range Officer. Any shooter that continues to contravene the RSOs will be asked to leave the range.

It is the duty of all range users to point out any observed failure to comply with RSOs to the shooter concerned and the Range Officer. Continued or serious breaches of the RSOs should be reported to, and be recorded by the SRO.

Prior to range use, each shooter must complete a range induction carried out by the SRO. This will require each shooter to read and familiarise themselves with the RSOs and a commitment to comply with them.

7. RANGE LOCATION

The Hume Range is located at 211 Takarau Gorge Road, Ohariu (recorded as 213 Takarau Gorge Road on Wellington City Council records)

The NZ TopoMap50 map sheet reference: BQ31 – Wellington

NZTM grid reference: 1747893 5435019.

8. APPROVED RANGE USERS AND PRIORITY OF USE

The range is open to all qualified NZDA Wellington and Porirua Branch financial members and their guests, associate members and members of other NZDA branches. Qualification is obtained by completing the range induction. Members may invite guests to use the range, however it is the responsibility of the inviting member to ensure their guest is familiar with, and complies with RSOs and to supervise where required.

Unlicensed shooters may use the range under the direct supervision of a licensed shooter. The range is also used during NZDA Hunter training Courses (HUNTS Course) and accordingly HUNTS trainees are authorised to use the range. Other groups of unlicensed shooters such as local Scout Groups may be invited onto the range by the SRO for organised firearms safety training shoots.

Wellington Branch members will have priority of use over guests and other NZDA branch members. All range users are to sign-in on the range register in the Firing Line Hut.

The 25m sighting-in range and the 100m range will have priority of use.

After 12:30pm the 200m range will have priority of use.

9. WARNING FLAGS AND DANGER SIGNS

Warning flags are to be raised whenever the range is in use. These provide a visual warning that live firing is, or is about to take place. Locations of range flags are as follows;

- Range Hut – a red warning flag is to be hoisted on the flag pole when the range is opened. This is the main warning flag and is to be raised before shooting commences on any range.
- 25m range – a red flag is to be inserted in the flag holder on the fence line
- 50m “running boar” range – a red flag is to be inserted in the flag holder provided on the block house
- 50m and 100m ranges – a red flag is to be inserted in the flag holder on the Firing Line Hut at the right hand end of the firing line.
- 200m, 300m & 500m ranges – a red flag is to be placed in the cones on the concrete pavers at the 200m firing line, road cones are to be placed on the track preventing vehicle access to the range hut, a warning sign is to be erected across the track advising that the 200m-500m range is in use and that the 25m and 100m ranges are closed.

10. INDIVIDUAL RANGES, RESTRICTIONS & CONDITIONS OF USE

The Hume Range comprises a 25m and 50m No Danger Area (NDA) range, and a multi distant Reduced Danger Area (RDA) field range, with firing distances of between 50m and 500m. The individual ranges and their conditions of use and restrictions are briefly described as follows;

25m “Sighting-in” Range (NDA)

This is primarily a “sighting in” or “zeroing” range that is situated opposite the Range Hut, with access over a post and wire fence. A firing platform capable of accommodating a maximum of two shooters is provided, with a target frame on the opposite side of a small creek. This is a NDA range with the cone of fire contained by a natural earth bank. Care must be taken in the carriage of firearms across the fence line. Firearms should be unloaded and, bolts should be removed.

Note: All un-zeroed rifles or those suspected of losing zero, must be sighted-in at 25m before advancing to longer ranges.

Restrictions and conditions of use;

- Rifle calibres up to and including .338 only, are permitted.
- Rifles firing pistol calibre cartridges up to 0.44 magnum are permitted.
- Airguns are permitted
- No more than two shooters may use the range at one time.
- If two shooters are using the range at one time, one will act as a Range Officer

50m “Running Boar” Range (NDA)

Designed and previously used as a moving target “Running Boar” range, this range is now only authorised for approved, static targets placed in the fixed target stands. The intention is for the range to be used for practical, off-hand shooting simulating a typical hunting type scenario. The cone of fire is contained by a natural earth bank to the rear.

Restrictions and conditions of use;

- The Range Officer should be consulted prior to use of the range
- Rifle calibres up to and including .338 only, are permitted.
- Rifles firing pistol calibre cartridges up to 0.44 magnum are permitted.
- Airguns are permitted
- No more than two shooters may use the range at one time.
- If two shooters are using the range at one time, one will act as a Range Officer.
- Shooters may fire from within the block house or in front. If two shooters are using the range, both must be firing from the same point.
- Additional hearing protection is recommended (ear plugs and ear defenders) if firing from within the block house.
- The range may not be used while the 25m range is in use. The 25m zeroing range will have priority of use.

Note: This range is the only range which may be used while firing is taking place from 200m, 300m and 500m firing line.

50m Centrefire & Rimfire Range (RDA)

This range runs at a slight angle to, and utilises the same firing line as the 100m range. A target frame spans the creek, with a small decked walkway providing access for setting up and inspection of targets. The cone of fire is contained by a natural earth bank to the rear.

Restrictions and conditions of use;

- Rifle calibres up to and including .338 only, are permitted.
- Rifles firing pistol calibre cartridges up to 0.44 magnum are permitted.
- Airguns are permitted
- To avoid cross-fire, range users must position themselves to the left hand side of the firing line.

100m Centrefire Range (RDA)

This is the main centrefire range with a raised and retained firing line. Target frames are inserted in metal box-section holders, and the cone of fire is contained by a natural earth bank to the rear.

Restrictions and conditions of use;

- Rifle calibres up to and including .338 only, are permitted.
- Supported and unsupported firing positions are permitted.

200m Centrefire Range (RDA)

This range runs in a similar axis as the 100m range with the firing line situated on the high ground above the range hut. The target line is situated slightly above and to the rear of the 100m target line. Cone of fire is also contained by the rising contour of the land behind the target line.

Restrictions and conditions of use;

- Rifle calibres up to and including .338 only, are permitted.
- All ranges bar the 50m standing range are to be closed.
- Cones and warning signs are to be erected to prevent access to the range hut and other ranges.

- Only supported firing positions are permitted.
- A red flag is to be erected on the firing line

300m Centrefire Range (RDA)

This range runs at an axis slightly to the right of the 200m target line, with the cone of fire contained by the rising contour of the land behind the target line. Restrictions / Conditions of use are as for the 200m range.

500m Centrefire Range (RDA)

This range runs at an axis slightly to the left of the 200m target line, with the cone of fire contained by the rising contour of the land behind the target line. Restrictions / Conditions of use are as for the 200m range.

Use of the 300m and 500m ranges is restricted to organised branch shoots only.

11. RANGE SAFETY ROLES

An NZDA qualified Range Officer must be on duty when the range is in use.

In the case of the 25m sighting range and the 50m standing range (Running Boar), the individual shooter will assume responsibility for safe operation of that range. When a second shooter arrives, one shooter will assume the role of Range Officer for that particular range. This will be a revolving role as shooters complete initial sighting and then move onto the 100m range.

During club events the SRO may decide to appoint additional Range Officers as deemed necessary for particular shoots, however the overall control of the range will remain with the primary Range Officer.

The Range Officer will ensure that all range users sign the Range Register.

The SRO will keep a record for each year, of all persons who have been trained and perform the role of Range Officer.

12. RANGE SAFETY RULES

Range commands are as follows;

“Range open” – shooters on the firing line may insert bolts, load and commence firing.

“Range closed” – shooters must unload and make safe (remove bolts, open actions)

“Range Clear” – shooters may advance forward of the firing line to inspect targets.

“Stop” – the “stop” command will be given in the event of a safety incident. Upon hearing the “stop” command, all shooters must unload, make safe, and remove themselves from the firing line.

Range procedures and safety rules are as follows;

- Prior to shooting the Range Officer will ensure that no stock is present on the range. Any stock must be cleared from the range before shooting commences. Should stock stray onto the range during shooting, the Range Officer will issue the **“Stop”** command.
- All newly arriving shooters are to report to the Range Officer and sign the Range Register. The Range Officer will at an appropriate time, invite shooters to setup shooting mats, rests, target frames and targets, and to bring firearms onto the firing line.

- Firearms are not to be loaded until the **“Range Open”** command is given by the Range Officer on Duty. Actions must remain open until this time.
- Once the Range Officer has issued the **“Range Open”** command, shooters may load and commence shooting until the **“Range Closed”** command is issued. All firearms on the firing line must be pointed down-range at all times.
- When the **“Range Closed”** command is issued, no further shooting may take place, shooters must unload and actions must be opened for inspection.
- Once the range has been closed, the Range Officer will visually inspect each firearm on the firing line to ensure that all firearms are unloaded and actions are open.
- When the Range Officer is satisfied that all firearms have been made safe, the command **“Range Clear”** will be issued, and the Range Officer will invite shooters to **“Move forward”** of the firing line to inspect targets.
- When safe to do so, shooters may make adjustments to sights during shooting, however the firearm must remain aligned with the range axis, ie firearms must remain pointed in the direction of the targets.
- No firearm may be handled on the firing line while shooters are forward of the firing line unless under the direct supervision or direction of the Range Officer.
- Once all shooters have inspected targets and returned to the firing line, adjustments may be made to sights and alignment of chronographs may take place.
- No person shall handle another person’s firearm unless permission is given by the owner or directed by the Range Officer.
- No firearm shall be left unattended other than on the firing line when inspecting targets, after being cleared by the Range Officer and the action left open.
- No firearm may be removed from the firing point until it has been cleared by the Range Officer.
- No firearm must be brought into any building unless unloaded and the bolt removed or action held open where applicable.
- Firearms must be point in a safe direction at all times.
- No pistols are permitted on the range.
- No centrefire semi-automatic firearms are permitted on the range.
- Up to .22 calibre rimfire semi-automatic rifles are permitted on the range.
- No firearms are to be stored on the range.

13. NEW AMMUNITION USE

If a new ammunition type is proposed for use on the range which exceeds the ballistic properties of currently approved ammunition types (up to .338 calibre) then it must be approved by the SRO before inclusion in the RSOs. Police must be notified of any such amendment to RSOs.

The following ammunition types are prohibited;

- Tracer ammunition
- Incendiary ammunition
- Armour piercing ammunition
- Explosive ammunition

14. TARGETS

Only soft paper, cardboard or targets of equivalent material are approved on the range. Targets are to be tacked onto the cardboard target “backing boards” provided. Standard NZDA paper targets are provided however, any appropriate paper target may be used. Targets and target frames may only be placed in the target holders provided.

15. STEEL TARGETS

Steel targets are not permitted on the range. While the RDA will contain all ricochet and popover, the range is situated on a working farm, and ricochet from steel targets may present a danger to stock.

16. MOVING TARGETS

No moving targets are currently approved for use on the range.

17. MINIMUM SAFE ENGAGEMENT DISTANCES

The minimum safe engagement distances for each range is as follows;

Range	Minimum Safe Engagement Distance
25 metre range	25 metres
50 meter rimfire range	50 metres
100 metre range	50 metres
50m Running Boar range	50 metres
200 metre range	200 metres
300 metre range	300 metres
500 metre range	500 metres

18. EYE AND HEARING PROTECTION

Hearing protection devices such as earplugs or ear defenders are to be used by all shooters and observers while shooting is in progress. Grade 5 or higher ear defenders are recommended. Eye protection is at the discretion of the shooter, though its use is recommended at shorter ranges. Both ear plugs and ear defenders are recommended if shooting from within the running boar block house.

19. MEDICAL AND EMERGENCY

First aid kits are provided in the Range Hut and 100m Firing Line Hut. Cell phone reception is available on the high ground behind the Range Hut if emergency services are required.

20. ACCIDENT AND INCIDENT PROCEDURE

In the event of an injury occurring to a shooter during range use, the Range Officer is to;

- Immediately issue a “STOP” command to cease all firing
- Ensure that all firearms are unloaded and made safe.
- Ensure the scene is safe for all range users and that no further hazard exists.
- Direct the rendering of first aid to the injured party and assess the need for evacuation to the nearest medical facility or transportation by emergency services.
- In the event of an emergency;

Dial 111 and ask for Ambulance Physical address is 211 Takarau Gorge Road, Ohariu

- If emergency services are to be called, direct at least one range user to await their arrival at the road front, and provide directions to the scene of injury.
- Secure the scene of the incident and any firearm involved is not to be removed.
- Report the incident to the police as soon as reasonably practicable.
- Instruct other range users to await the arrival of the Police, however the Range Officer should record the names of those present at the time of the incident and their contact details.
- Report the incident to the SRO.
- Direct any media enquiries to the President or CEO of the NZDA.

21. FIRE PRECAUTIONS AND PROCEDURES

In the event of a fire the range is to be immediately closed, and all firearms are to be made safe.

A fire extinguisher is situated in the Range Hut in the event of fire, however should the fire become unmanageable or pose any danger to range users, the affected building should be immediately evacuated and Fire and Emergency called.

Dial 111 and ask for Fire and Emergency – Physical address is 211 Takarau Gorge Road, Ohariu

22. RANGE CLEARANCE

At the conclusion of shooting, firearms will be unloaded and made safe by removal of the bolts where applicable. After being cleared by the Range Officer, firearms may be removed from the firing line and stowed in vehicles. Cleaning of firearms may be conducted on the range or in the range hut however the firearm must be made safe prior to entry. Fired brass is to be collected and should be deposited in the bin provided in the 100m firing line hut.

All warning flags are to be lowered and stowed, and target frames are to be returned to the 100m firing line hut. The Firing Line hut is to be locked and the key returned to the Range Hut which is also to be locked.

23. UNAUTHORISED ACCESS AND/OR USE OF THE RANGE

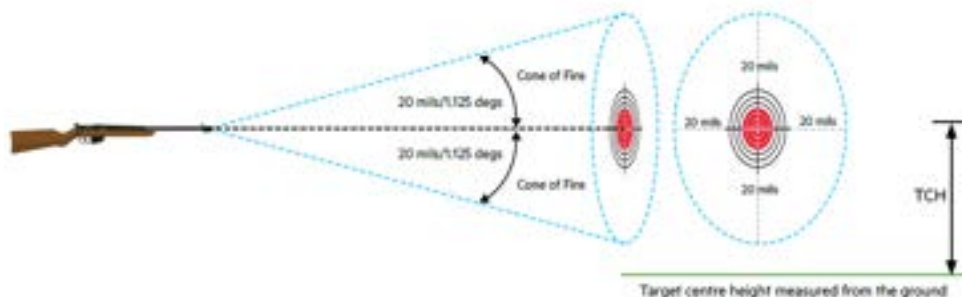
Only approved range users and their guests are authorised to use the range, the range is not open to the public. Any other individual or organisation that wishes to use the range, must seek written approval from the SRO. Any individual that is not able to provide proof of their status as an approved range user may be asked to leave the range. Any refusal to leave the range as directed by the Range Officer should be reported to the Police.

24. CONES OF FIRE

The Cone of Fire (CoF) is the distribution of fired projectiles within a margin of error in the vertical and horizontal planes. CoF is applied around each line of sight. The CoF accounts for acceptable deviation caused by errors associated with the firer and machining or manufacturing tolerances and allows an additional margin for unacceptable firer error.

The authorised CoF applicable on the Hume Range for the 25m, 50m running boar, 50m and 100m ranges is 20 mils. The CoF is applicable to all approved rifles and ammunition in unsupported positions (prone, sitting, kneeling and standing).

On the 200, 300 and 500m range where only supported shooting positions are authorised, the CoF is 10 mils.



Note: 1 mil equals 10 cm at 100 m, therefore 20 mils equals 200 cm.

General Practice: Un-zeroed rifles or those that are suspected of losing zero following a drop, knock etc, must be “sighted-in” at the 25m sighting-in range before proceeding to the 100m range. If the shooter is not on paper at 100m then they must revert to the 50m range. If still not on paper at 50m, the shooter must return to the 25m range and re-sight.

25. INABILITY TO ACHIEVE CONE OF FIRE

If for any reason shots fired fall outside the Cone of Fire (CoF) the Range Officer is to cease all firing and identify the shooter responsible. That shooter's next shot should be observed and if it falls within the CoF allow that shooter may continue shooting.

If the observed shot does not fall within the CoF, the shooter is to be provided with a suitable coach with the intention of bringing the next round within the CoF. If the shooter is unable to achieve the CoF they are to be prevented from further firing.

Shooters prevented from firing may resume firing following the completion of a club approved training programme and further observation to ensure they can achieve the CoF.

Prior to firing at ranges of 200m or beyond, initial zero confirmation will take place at 100m. The Range Officer will observe the fall of shot of each shooter. Only those shooters that are able to achieve the CoF at 100m, will be permitted to shoot at longer ranges.

26. UNLICENCED OR INEXPERIENCED SHOOTERS

Unlicensed or inexperienced shooters are permitted to use the range at the discretion of the Range Officer. All unlicensed or inexperienced shooters must shoot under direct supervision of a licensed and approved range user. The supervisor must be in a position to take control of the firearm if required.

27. TEST FIRING

Testing firing of firearms following repair and/or modification work carried out by professional gunsmiths is permitted. Load development is also permitted on the range using accepted practices (working up from minimum or safe loads).

- Homemade or improvised firearms are not permitted on the range.

28. AIR DANGER HEIGHT

The air danger height (ADH) is the maximum height above ground level (AGL) which a hazard may exist. The ADH is either the highest point of an aimed shot or its maximum ricochet height.

If any aircraft or other aerial hazard enters the range ADH the Range Officer is stop all firing for the duration of the intrusion.

The ADT for the Hume Range is 500 ft or 150m.

29. RANGE MAINTENANCE PLAN

Range maintenance will be carried out annually prior to the opening of the range following the lambing closure. Annual maintenance will include;

- Digging out and removal and safe disposal of projectiles from the bank behind the target line.
- Inspection of warning signs and flags, replacement as necessary.
- Inspection of target frames, repairs to be carried out as necessary.

Should it be noted that any item requires maintenance or replacement in between the scheduled maintenance above, it attention should be brought to the attention of the SRO for further action.

30. CHILDREN (MINORS)

Any children accompanying an authorised range user or their guest are to be under the direct supervision of that member at all times, and the member must ensure that RSOs are complied with at all times. Where unsupervised minors pose a distraction to other shooters or the Range Officer themselves, or if the Range Officer perceives safety is compromised by the behaviour of minors, that member and their children will be asked to leave the range.

31. HEALTH AND HYGIENE

A toilet and hand basin is provided within the Range Hut for the use of shooters. Water is fed via a grey pipe from a water tank behind the Range Hut, and must be turned on using the blue handled value situated on the grey pipe.

32. DOMESTIC ANIMALS

The property is a working farm, and no dogs or other animals are to be brought onto the range.

33. AMENDMENT TO RANGE STANDING ORDERS (RSO)

Only the SRO may amend the RSOs. Any proposed amendments to the RSO's that affect the ballistic characteristics, operation and safe use of the range will be undertaken by NZDA Wellington Branch as the SRO. An amended copy of the RSO's must be provided to NZ Police. Amendments are to be promulgated to all members to ensure awareness and compliance with any such amendments.

34. AUTHORISATION OF RANGE STANDING ORDERS (RSO)

These RSO's are authorised by NZDA Wellington Branch as the SRO.

35. DISTRIBUTIONS LIST

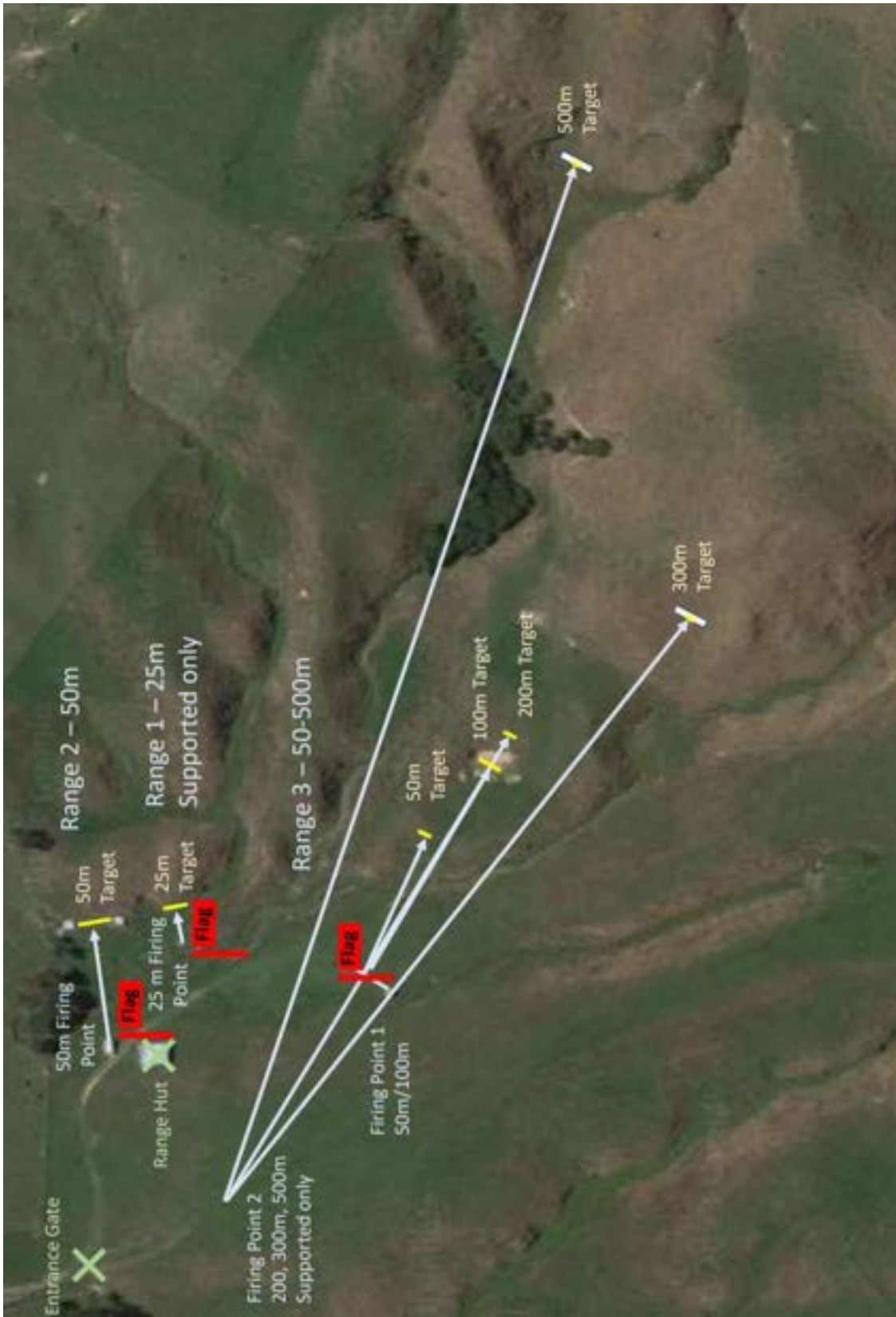
All members NZDA Wellington Branch

Hume Range – Copy in Range Hut and Firing Line Hut

NZDA National Office

New Zealand Police

APPENDIX A HUME RANGE LAYOUT

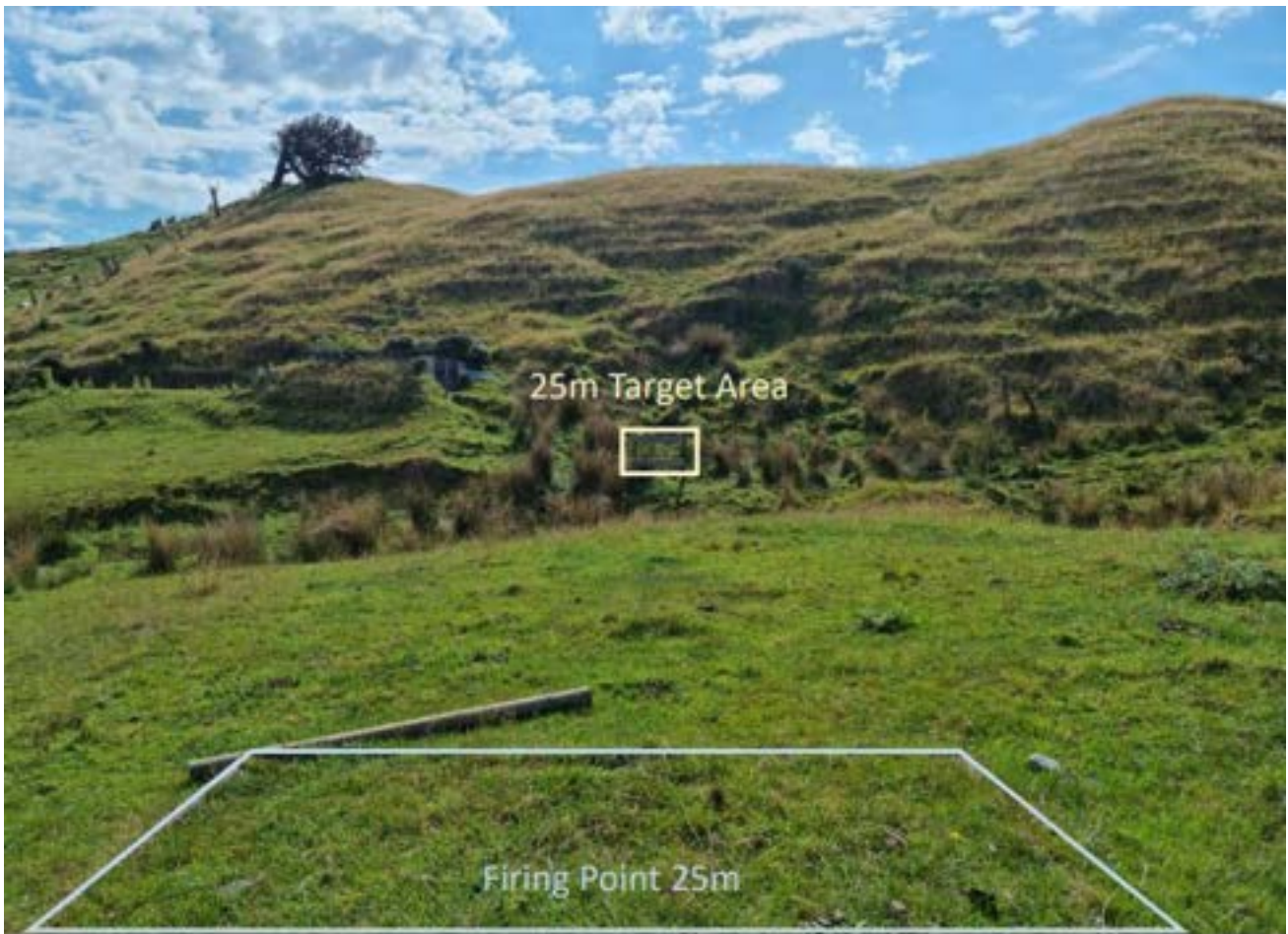


APPENDIX B HUME RANGE TARGET LOCATIONS AND FIRING POINTS

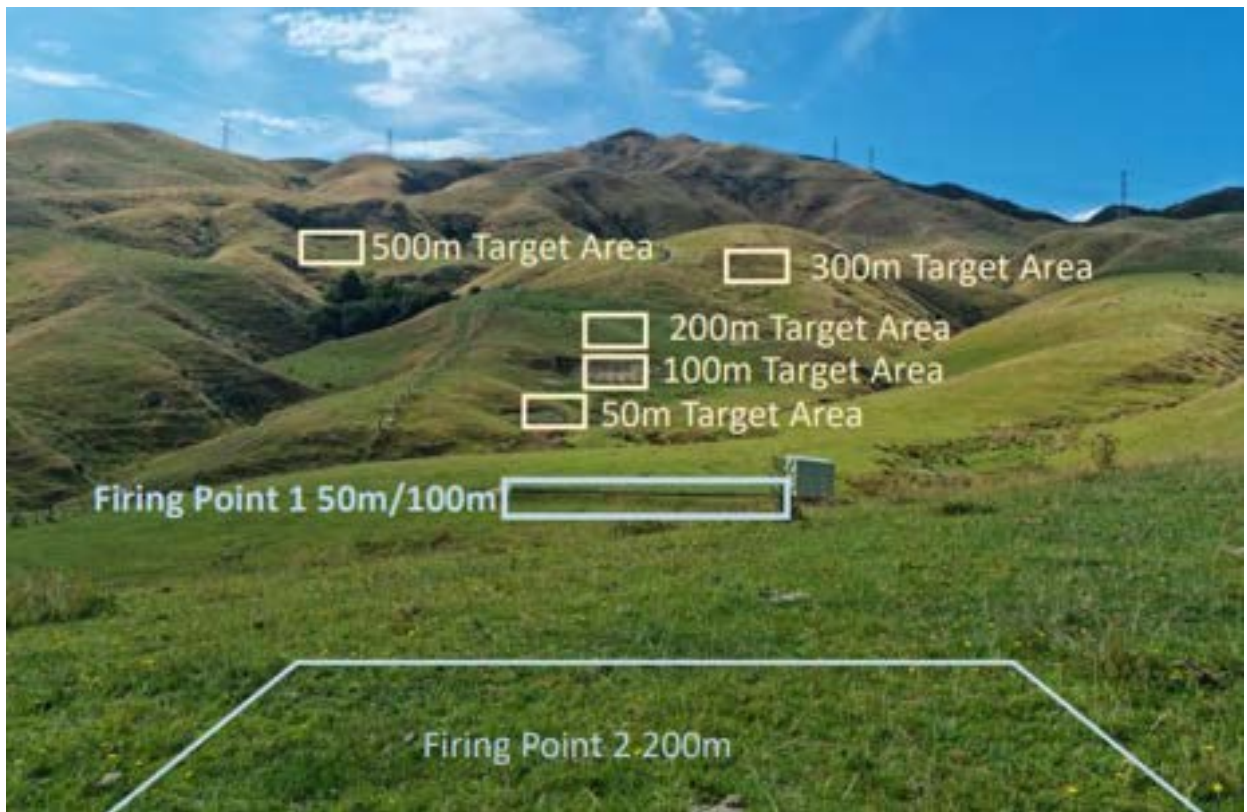
50m Running Boar (Now static)



25m Sighting Range

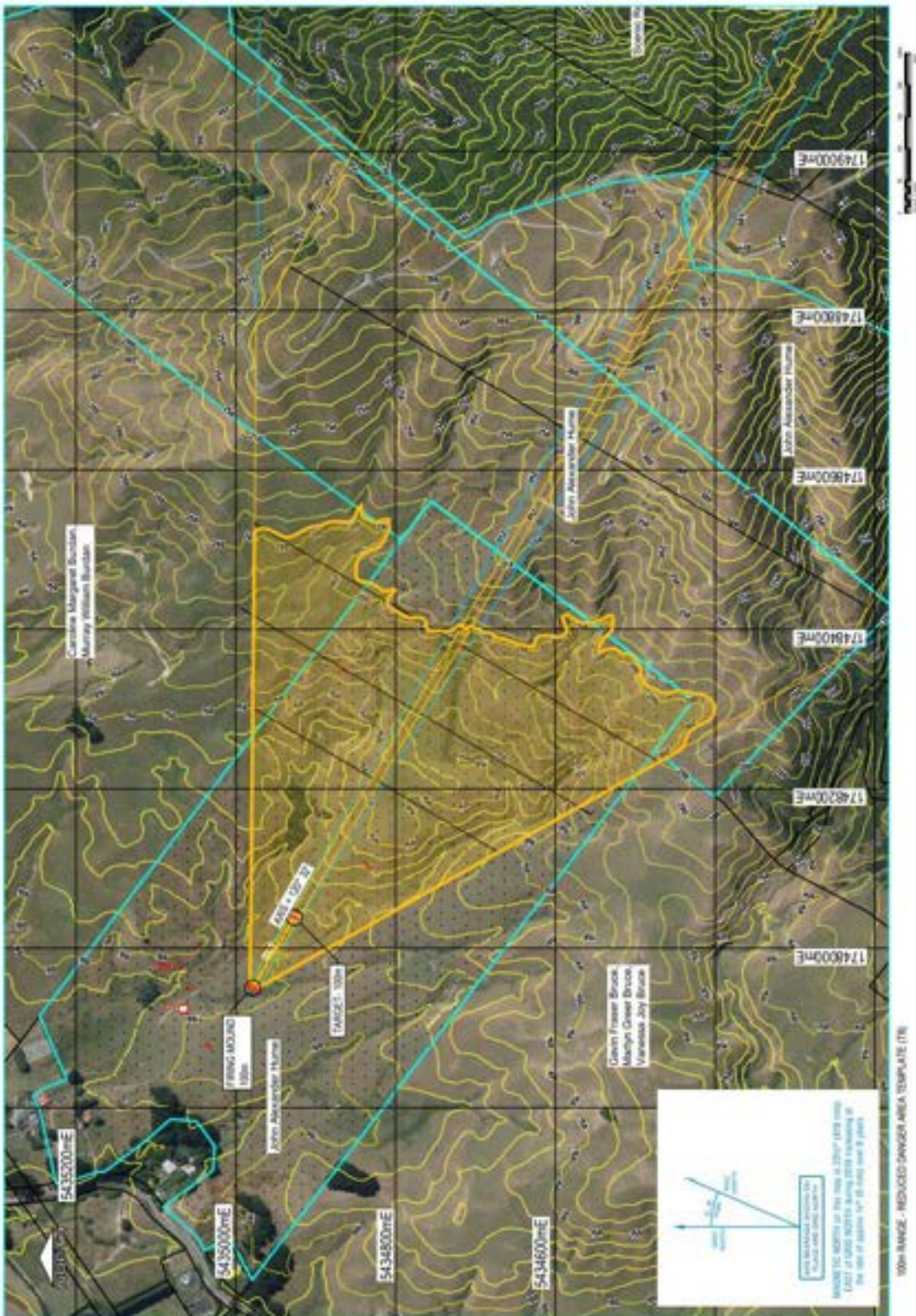


50M – 500M Multi Distance Range

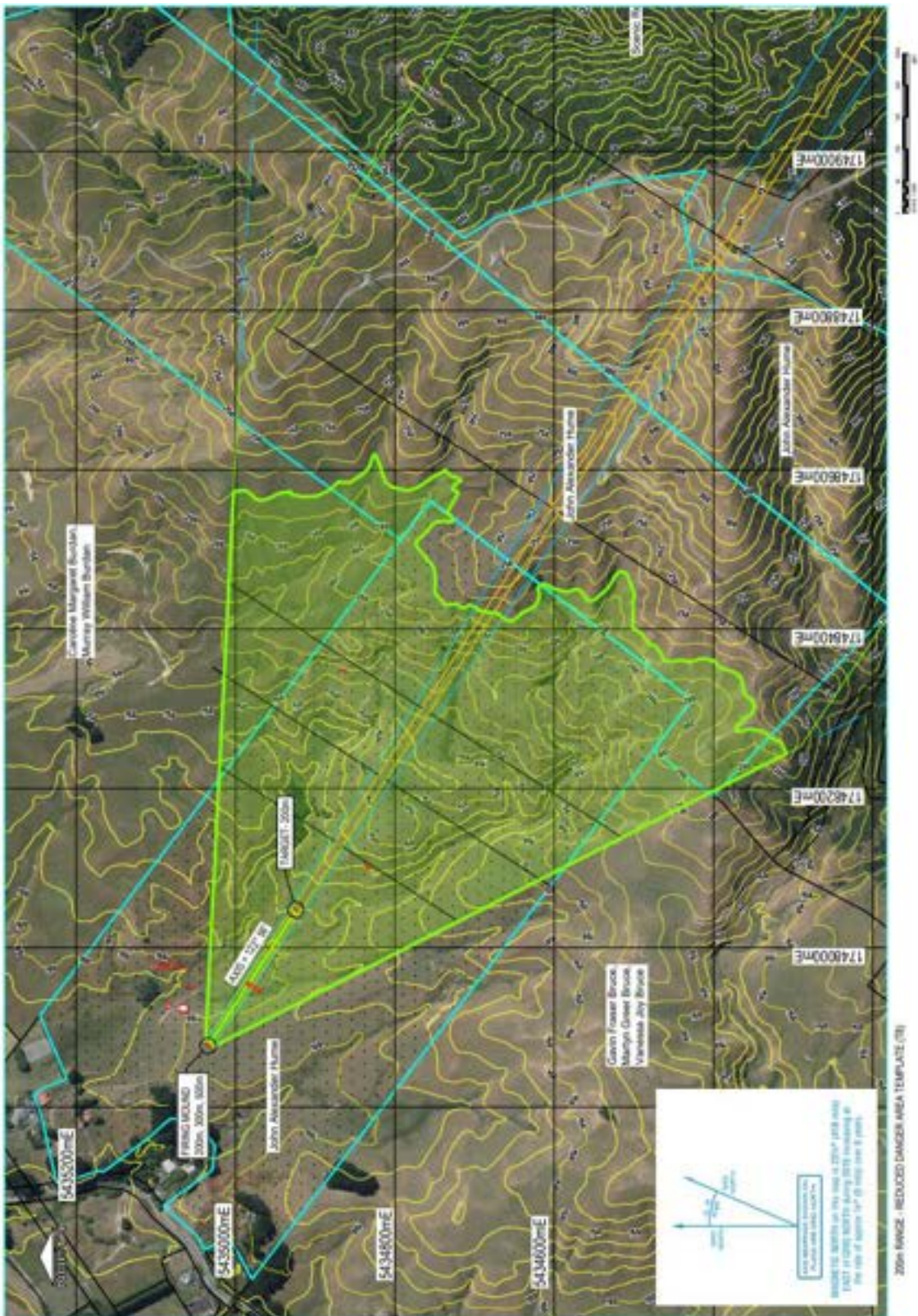




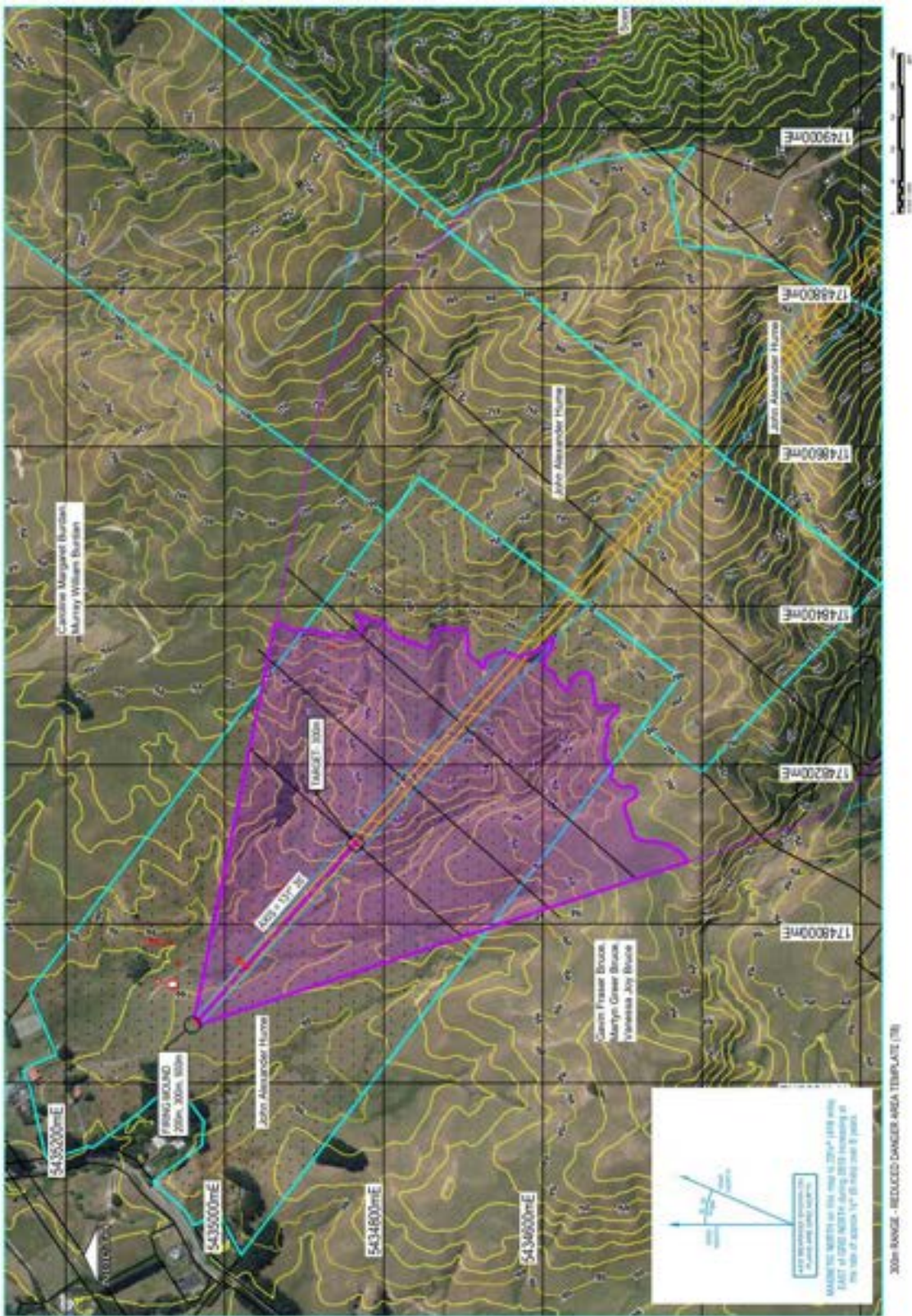
APPENDIX C 100M RANGE TEMPLATE



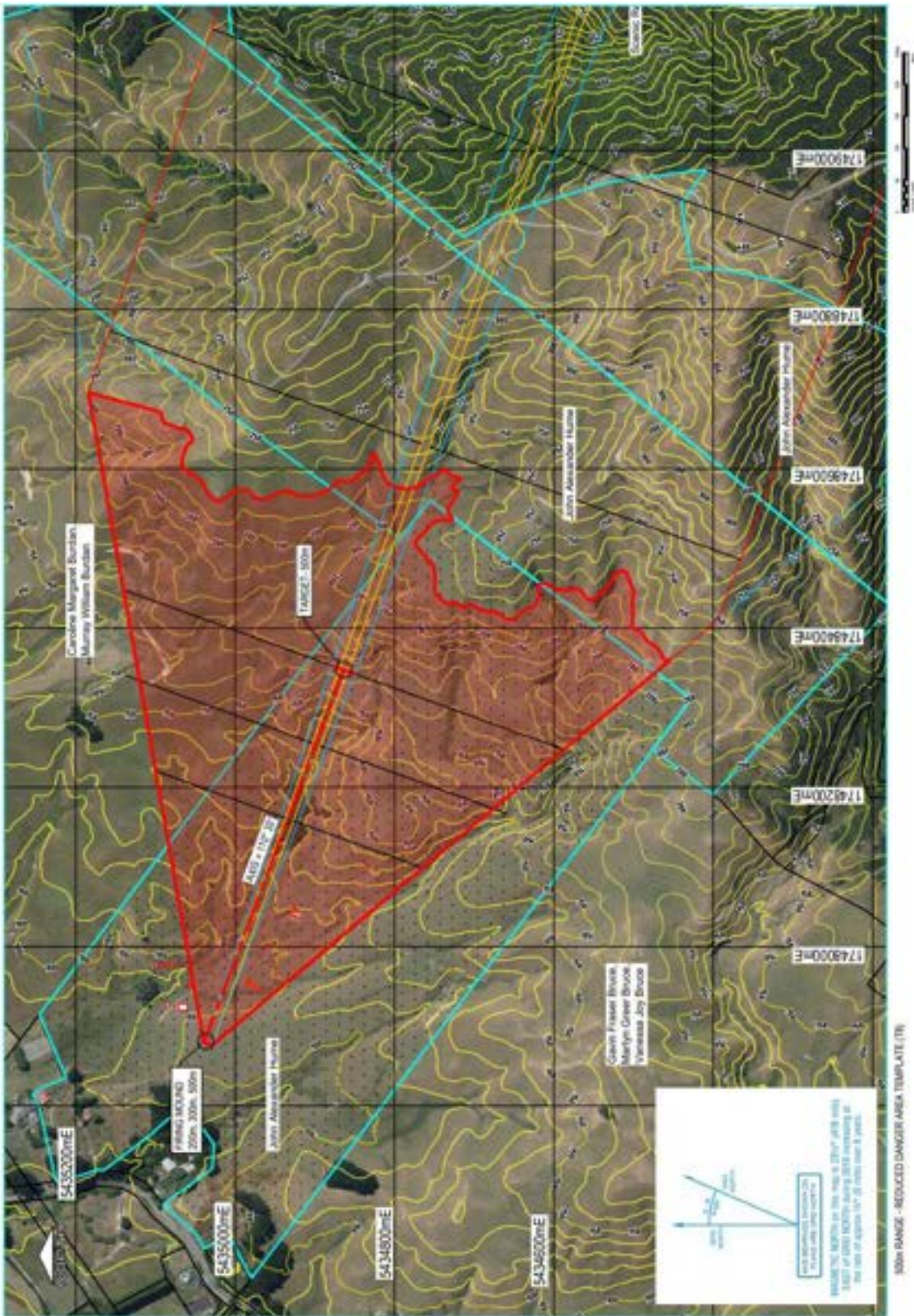
APPENDIX D 200M RANGE TEMPLATE



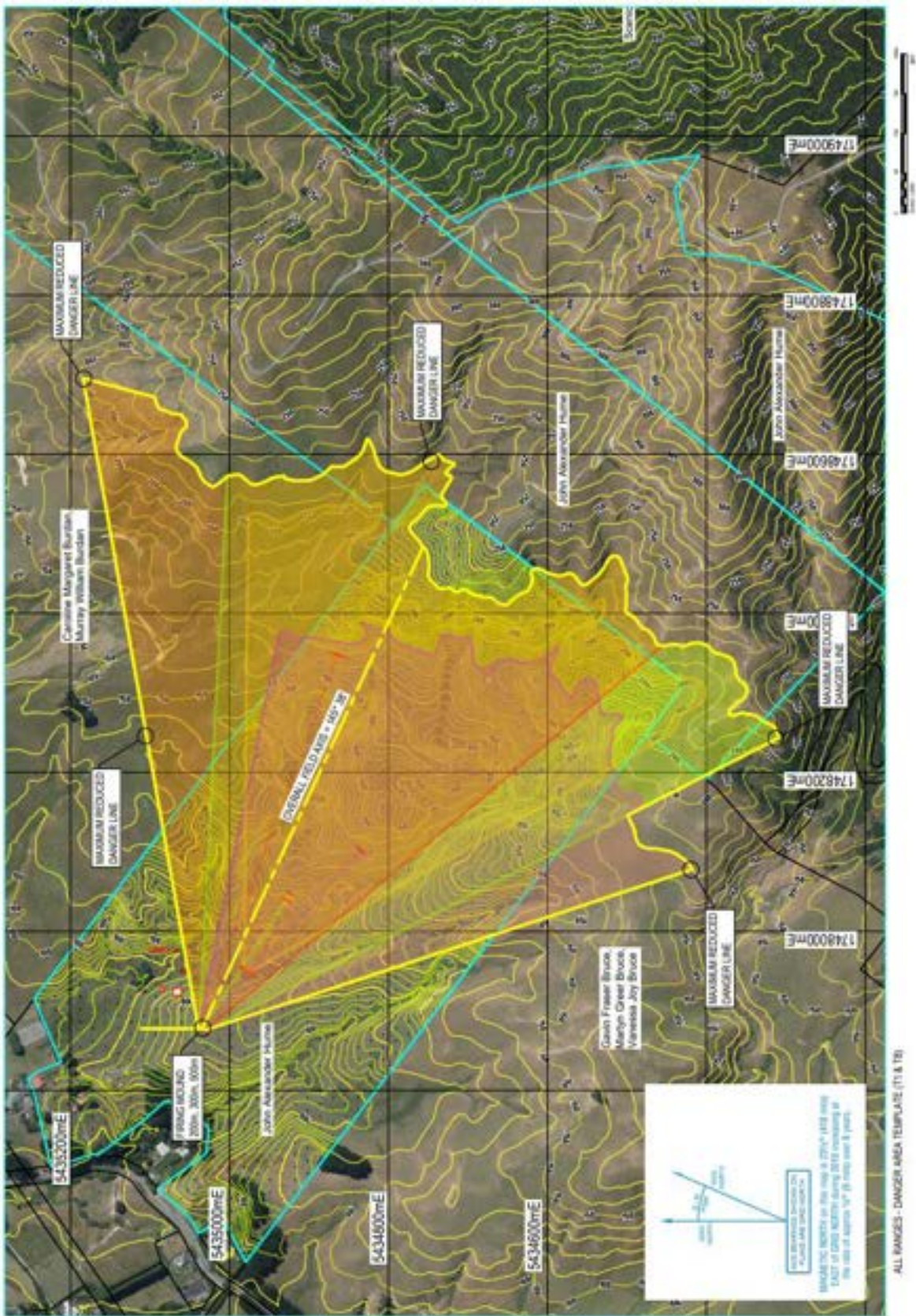
APPENDIX E 300M RANGE TEMPLATE



APPENDIX F 500M RANGE TEMPLATE



APPENDIX G HUME RANGE MULTI DISTANCE RDA TEMPLATE



APPENDIX H CONTACT LIST

NZDA CEO	Gwyn Thurlow	0274 060 060	gwyn.thurlow@deerstalkers.org.nz
Wellington Branch President	Tom McCowan	027 284 0809	tom.mccowan@deerstalkers.org.nz
Richard Mailman	Branch Committee	027 710 4898	
John Kovacs	Branch Committee	021 346 087	john.kovacs@deerstalkers.org.nz
John Hume	Property owner	027 278 7599	jandlhume@xtra.co.nz
Murray Burdan (95 Takarau Gorge Rd)	Adjoining owner	021 333 920	murrayburdan@gmail.com
Gavin Bruce (255 Takarau Gorge Rd)	Adjoining owner	021 906 252	bruceohariu@hotmail.com